



The Outer Ring Road, 15 years later

continued from page 1

stakeholder groups to closely monitor the design and construction of the road.

Groups represented on the Outer Ring Road Environmental Advisory Committee were the Pippy Park Commission, a resident of Pippy Park, the Friends of Pippy Park, the City of St. John's, a resident of the city and the Natural History Society. The Pippy Park Conservation Society was invited to nominate a representative but declined. In addition the Friends and Lobbyists of the Waterford River, the Town of Paradise and other groups like the Fluvarium, whose area of interest might be affected at

certain times were invited onto the Committee.

The Committee met frequently over the whole period that the road was under construction including many site visits. It was proud of the many improvements it was responsible for and the many incidental benefits it generated. While the Pippy Park Conservation Society was unsuccessful in stopping the construction of the road it has to be acknowledged that it was built more carefully paying due respect to the environment as a result of their vigorous campaign. I will be writing about some of the good thing that happened in the next issue.



Outer Ring Road Environmental Advisory Committee members inspect the environmental protection measures installed to protect Fogarty's Wetland during construction, May 23, 1996 [Above]. Fogarty's Wetland after the Outer Ring Road opened. [Below]

Photos by Mike Manning.



4

Friends of Pippy Park Celebrate 25 Years



Founded in 1984, the Friends of Pippy Park is celebrating its silver anniversary this year. Plans are underway to mark this special milestone with an Anniversary dinner.

The Friends of Pippy Park is an incorporated, registered charity intended to help promote Pippy Park, assist in enriching the experiences for visitors of the Park, and within the limits of the group, raising money and sponsoring projects to further the objectives of the Park and the Pippy Park Commission.

The Friends strive to be a helpful, non-confrontational support group for the Park and the Pippy Park Commission. It wishes to ensure the survival and enhancement of the Park by encouraging

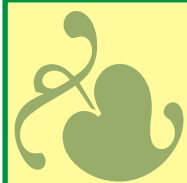
its maximum appreciation and sustainable use by the largest number of people.

A few of the Friends achievements over the years include the Children's Gardening Programme which ran for 14 years, the sponsoring of many work projects including research on park history, building a rustic trail beside Nagles Hill Brook up to the Three Pond Barrens, environmental cleanups and stream enhancements.

The Friends have published two brochures in cooperation with the Pippy Park Heritage Committee and have been organizing the annual "Christmas in Pippy Park" pageant for the whole of its 25 years, most recently in cooperation with the Rainbow Riders. You will hear much more about the Friends

throughout this their anniversary year.

Join the Friends!



Membership is only \$10 per year, and helps support Park activities.

A downloadable Membership Form is available on the Park's website, under "Our Partners and Friends", or at:

www.pippypark.com/images/pippyfriendsapplication.pdf



IN PIPPY PARK

IN PIPPY PARK is published six times a year by the Pippy Park Promotions Committee. Material published within reflects the events and happenings in Pippy Park and the organizations associated with it.

Contributions are welcome, and all contributions are presumed to be submitted for the mutual enjoyment of readers, thus no payment will be made for contributions.

Editor and Primary Contributor: **Mike Manning**
Production Assistance: **Steve Garland**

Content may be reprinted for non-commercial purposes only, and full credit/references must be provided.



IN PIPPY PARK

March, April 2009



Volume 10, Number 2

THIS ISSUE SPONSORED BY A MEMBER OF THE PIPPY PARK PROMOTIONS COMMITTEE

The Outer Ring Road, 15 years later



Construction was well advanced when this picture of the work-in-progress was taken on September 14, 1998 on the Outer Ring Road at the Nagles Hill overpass, just below the golf courses. Photo by Mike Manning.

By Mike Manning

It was exactly 15 years ago when the Minister of Works, Services & Transportation appointed the St. John's Outer Ring Road Environmental Advisory Committee. This committee consisted of representatives of a wide variety of stakeholder groups and was chaired by a representative of the Department. The Committee was mandated to monitor all environmental issues connected with the design and construction of this very controversial arterial road.

The appointment of the committee came as a result of a prolonged and very bitter campaign by many environmental activist groups against the road. There were at least 120 letters, articles and editorials in the

local press on the subject and more than one demonstration on the site!

As far back as the 1960s the long-term plans for the region had included a major bypass road to connect the Trans Canada Highway with the east end of St. John's. When Pippy Park was established the only practical route for this road was right through the middle of the park!

The Pippy Park Conservation Society (not to be confused with the Friends of Pippy Park) was established in 1989 by Dr. John Bear when it appeared that the road would actually be built in the near future. The Society launched a relentless campaign against the road, citing the damage to the integrity of the park, the damage to the vegetation, the wildlife and the aquatic

environment. The Pippy Park Commission of the day while dismayed at the prospect of such a huge construction project, had to admit that the road had been shown on the original Pippy Park Master Plan right from the start.

Through the relentless campaigning, primarily by the Conservation Society, Government set up a Commission headed by Grand Falls Engineer Mr. Terry Goodyear. The Commission held public hear-

ings for three weeks in March of 1993. One of the most important recommendations in the Goodyear



Members of the Outer Ring Road Environmental Advisory Committee keep a watchful eye on construction progress during a monitoring tour on May 23, 1996. Photo by Mike Manning.

Report was the appointment of a committee of environmental and other

continued page 4

Published by the FRIENDS OF PIPPY PARK and the PIPPY PARK PROMOTIONS COMMITTEE.

Sponsored by the PIPPY PARK COMMISSION
Phone (709) 738 3611. E-mail mike.manning07@gmail.com
www.pippypark.com



Family Fun Day! Winterfest '09

The lack of snow during early March caused the cancellation of this year's Pippy Park Winterfest. The students of the College of the North Atlantic and the Pippy Park Promotions Committee had put a lot of work into preparations but all the many family activities were centred around snow!

In the meantime the City Parks and Recreation Department did have a very successful ski and snowshoe rental programme at the North Bank Lodge in the Pippy Park Campgrounds. The groomed and lighted tracks were much appreciated by the huge number of people of all ages

and skill levels who enjoyed the snow day and night while it was there!

The more challenging trails on the Three Pond Barrens were well used but because snow conditions were frequently quite poor the snowshoers were the most frequent users. There is no doubt snowshoeing has become really popular in the past few years. The modern snowshoes are very easy to use. Anyone who can walk can feel comfortable on snowshoes under almost any kind of snow conditions!



Upgrading More Improvements to Park Facilities this Spring

Pippy Park Campgrounds

The very successful Campgrounds on Nagles Place will see further improvements when it opens in the Spring. There is a new shelter now being built in Loop 4 where the extra large RV Caravans are accommodated. The shelter will allow the all Campground visitors to get together for social gatherings, barbecues etc. It will also be a place where laptops can be used as it will be within easy wireless range of the internet facility that was installed last year. In Loop 3 every site will now be fully serviced with water, sewer and electrical hookups and the roadway will be fully paved.

The new Registration Office at the entrance to the Campgrounds will be up and running when the Camp-

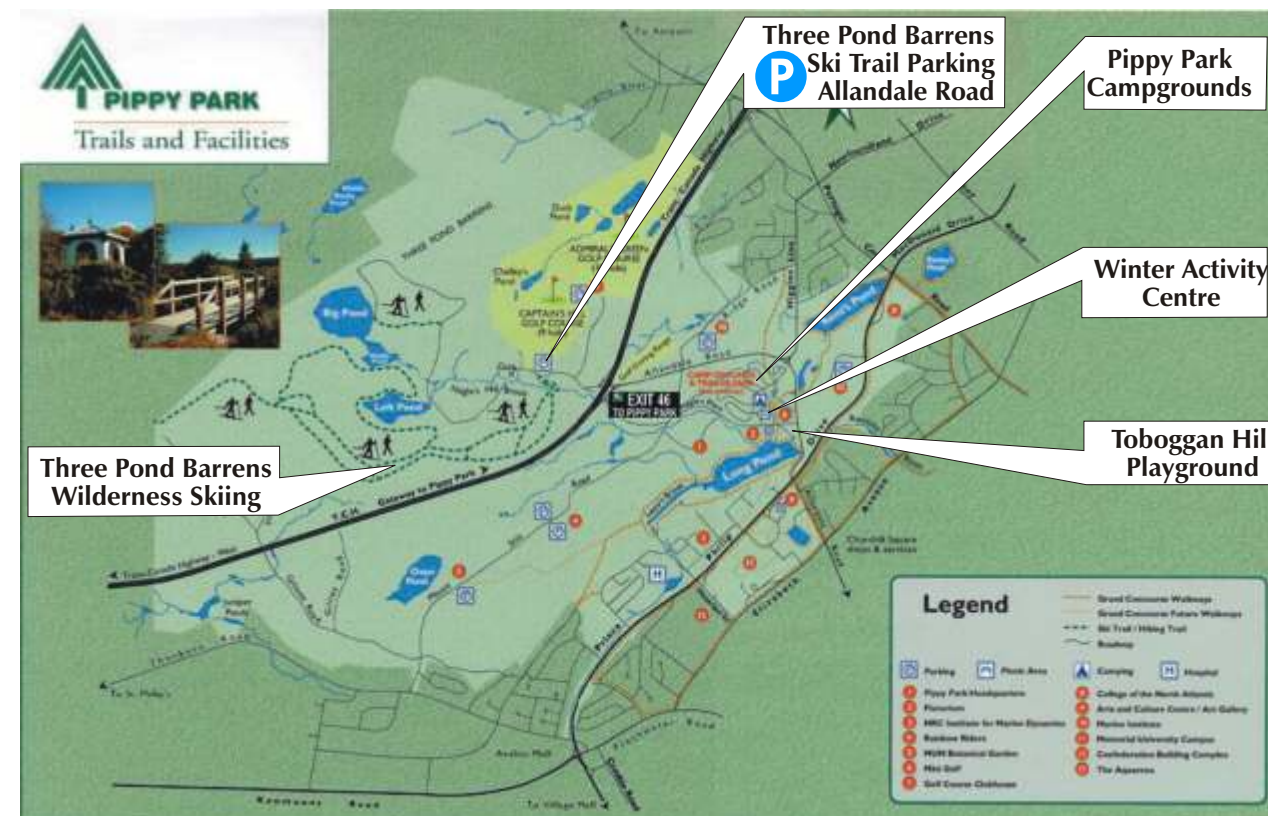
grounds open. This will simplify registration and avoid line-ups when things get really busy, as they always do every summer.

Toboggan Hill Playground

The children and their parents will be pleased to hear that the playground at the top of the "toboggan hill" will have new play equipment installed in the Spring. This playground was always one of the most popular spots in Pippy Park before the old equipment had to be removed last year because of old age.



Pippy Park Playground - St. John's, NL
Dwg. 8091429 View A



MUN Students take on Ski Trail Maintenance

On Saturday, March 2nd, a dozen enthusiastic volunteers from Memorial University, along with members of the Friends of Pippy Park, strapped on snowshoes and donated an afternoon of labour to assist with trimming trees and bushes along the Three Pond Barrens ski trails. This long overdue trail maintenance was much appreciated by skiers and snowshoers using the trail during the trimming exercise.



Online Now! New Website Launched

Just in time for the 2009 season, the Pippy Park Commission lunched a new website for the Park. Located at the same address as the old website, (www.pippypark.com) the new website features enhanced graphics and updated features about the Park and it's many facilities. The website also features a crisp, clean look and easier to navigate pages. Check it out today!



Park Info Online:
www.pippypark.com

