



Long Pond

ARTS AND CULTURE CENTRE

Box Office Phone 729-3200, Fax 729-0247  
www.artsandculturecentre.com

- ❖ **Apr 10<sup>th</sup>-12<sup>th</sup>:**  
PRINCE OF WALES COLLEGIATE presents:  
**GREASE**
- ❖ **Apr 17<sup>th</sup>:**  
BABY BUG PRODUCTIONS present:  
**FLEETWOOD MAC Tribute**
- ❖ **Apr 18<sup>th</sup>:**  
MONTREAL DANSE presents:  
**SOMEWHAT LIKE YOU**
- ❖ **Apr 19<sup>th</sup>:**  
RON HYNES
- ❖ **Apr 22<sup>nd</sup>-23<sup>rd</sup>:**  
THE SCHOOL OF DANCE
- ❖ **Apr 26<sup>th</sup>:**  
SHALLOWAY
- ❖ **Apr 30<sup>th</sup>:**  
FUSION DANCE STUDIO
- ❖ **May 4<sup>th</sup>-5<sup>th</sup>:**  
BARBARA ASHLEY SCHOOL OF DANCE
- ❖ **May 9<sup>th</sup>-10<sup>th</sup>:**  
CONNIE PARSONS SCHOOL OF DANCE
- ❖ **May 14<sup>th</sup>-16<sup>th</sup>:**  
THE DANCE CENTRE

THE WORKS

17 Westerland Road  
Aquarena, Field House and other recreation facilities  
Phone 737-3799  
Website: www.theworksonline.ca

CENTRE SCOLAIRE ET  
COMMUNAUTAIRE DES GRANDS-  
VENTS.

Ridge Road. A library, resources and events for the francophone community. Phone 757-2816 or 757-2817  
website www.acfsj.ca

FLUVARIUM

5 Nagles Place. Phone 754-3474 for information on hours and programmes visit their website:  
www.fluvarium.ca

UNIVERSITY BOTANICAL GARDEN

306 Mount Scio Road Phone 737-8590  
The garden's winter office hours Mon-Fri 9 am to 4 pm.  
  
Closed for the Winter Season, and will re-open May 1st. The Conference Room is available for meetings and conferences.

For information on the "Bloomin' Teapot" tearoom call 753-8327

For information on events, programmes visit their website: www.mun.ca/botgarden

A.C.HUNTER PUBLIC LIBRARY

at the Arts and Culture Centre  
Website: www.publib.nf.ca Phone 737-2133/3950

ELAINE DOBBIN CENTRE FOR  
AUTISM

70 Clinch Crescent (across from the Janeway Hospital)

"THE PANTRY" AT SHAMROCK FARM is open Monday-Friday, 10 am-4pm. For reservations call 722-8200. Ask about the availability of the Conference Room or Board Room!



**IN PIPPY PARK**

IN PIPPY PARK is published six times a year by the Pippy Park Promotions Committee. Material published within reflects the events and happenings in Pippy Park and the organizations associated with it.

Contributions are welcome, and all contributions are presumed to be submitted for the mutual enjoyment of readers, thus no payment will be made for contributions.

Editor and Primary Contributor: **Mike Manning**  
Production Assistance: **Steve Garland**  
Printed by MUN Printing Services, St. John's.

Content may be reprinted for non-commercial purposes only, and full credit/references must be provided.



**IN PIPPY PARK**

March - April, 2008



Volume 9, Number 2

THIS ISSUE SPONSORED BY A MEMBER OF THE PIPPY PARK PROMOTIONS COMMITTEE

**Pippy Park Celebrates 40 Years of Progress**

**40 Years Ago**

**MY "PIPPY PARK":  
Memories of Forty  
Years Ago**

by Mike Manning

When I come to review all the progress that has been made in Pippy Park since 1968, the extent of it comes as a great surprise.

I had always imagined that progress has been very slow and it is true that the financial state of the Province during most of that time has severely limited the Pippy Park Commission's options.

*continued next page*



Star attractions at Pippy Park's Winterfest '08 were members of the Royal Newfoundland Constabulary's Mounted Unit, shown here at the entrance to the Park Campgrounds. More details inside. Photo: Bob Halfyard

**C. Gordon Butler, Former Pippy Park Chairman Remembered**

**Obituary**



C. Gordon Butler

C. Gordon Butler, former Chairman of the C.A. Pippy Park Commission, died at the ripe old age of 93 on March 1<sup>st</sup>. Gordon was a long-time civil servant with the Provincial Department of Public Works.

In 1972 he was appointed as a member of the C. A. Pippy Park Commission. In 1977 he was appointed Vice Chairman and in 1978 he became Chairman upon the resignation of the previous Chairman Tom Freeman.

During the six years he was associated with the Commission he saw the park take on most of its present configuration. The University Botanical Garden, then known as Oxen Pond Botanic Park, was first approved in 1971 and became firmly established over the following years. The Children's Animal Farm, the first Golf Course (now known as the Captain's Hill Golf Course) was started and so was the ill-fated Scout/Guide Campsite of

the Three Pond Barrens, which eventually succumbed to unrelenting vandalism. The Quidi Vidi Hiking Trail was built and the Pippy Park Campgrounds were also started during that period.

Gordon Butler also saw a great amount of activity in the development of University Campus buildings and the huge Health Sciences Centre. Gordon was a real gentleman, a good friend to the park, and he will be missed.



Published by the FRIENDS OF PIPPY PARK and the PIPPY PARK PROMOTIONS COMMITTEE.

Sponsored by the PIPPY PARK COMMISSION  
Phone (709) 738 3611. E-mail mike.manning07@gmail.com  
www.pippypark.com



## My "Pippy Park" 40 Years of Progress

However, it has turned out that progress has in fact been quite impressive and most important of all, nature has been allowed to remain the dominant "developer".

### MAJOR DEVELOPMENTS SINCE 1968

The Pippy Park Campgrounds is one of the most desirable RV tourist destinations in the province. The happy choice of site (which would have been on Mount. Scio Road if the land there had been available at the time) and the preservation of most of the vegetation, provides both convenience and privacy to its visitors, in addition to easy access to the shopping and nightlife of the city. In the height of the summer it hosts more tourists than any one of the largest hotels in St. John's. In 1968 this area consisted of houses, gardens and woodland.

The main campus of Memorial University is within Pippy Park and the nationally celebrated Botanical Garden at Oxen Pond has been one of the most important assets in the park to have been developed during the past 40 years. It provides environmental education to thousands of school-children and visitors every year in an inspiring setting. The setting combines a first class collection of exotic Alpine and Ericaceous plants with a thoroughly enjoyable insight into



Pippy Park grew around the desire to have a park-like setting for public institutions in St. John's. Here, Confederation Building East and West Blocks (left and right) are surrounded by pleasant landscapes, brooks and groomed walking trails.

native birds, insects and plants. It also conducts valuable research into various botanical subjects. In 1968 this area was woodland that had been partly burned and contained only a few private gardens.

By encouraging other, mostly volunteer organizations to partner with the Commission we now have two magnificent golf courses, the Admiral's Green and Captain's Hill and perhaps the most inspiring Golf Clubhouse in Canada overlooking the entire city of St. John's and to the Atlantic Ocean beyond. This area was occupied by the Halliday and Thomas (Lookout) Farms in 1968.

The Quidi Vidi/Rennies River Development Foundation (QV/RRDF), is operated by a volunteer run non-profit society interested in the preservation of the exceptional characteristics of the freshwater habitat in the area and the education of the youth and adults in the value of the

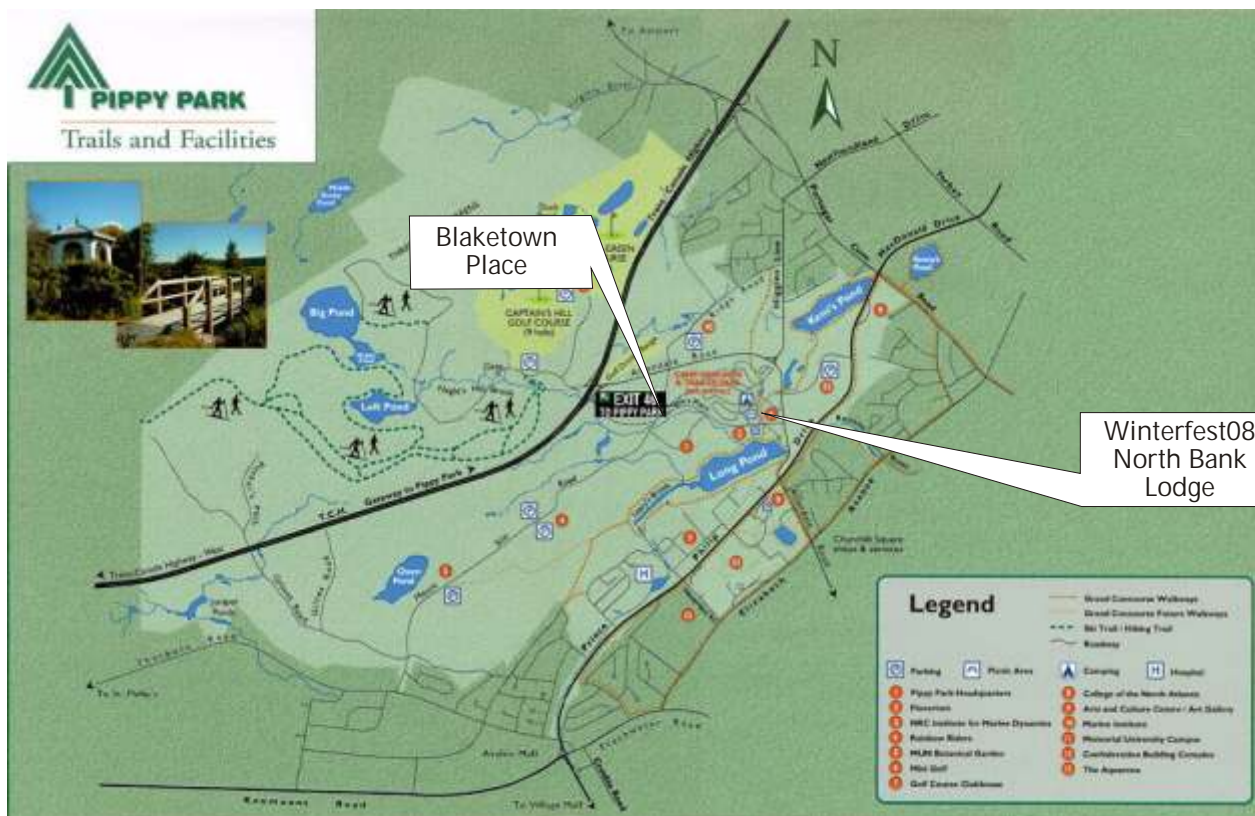
freshwater environment as a whole. The architecturally imaginative Fluvarium building and its successful programme is the product of more than twenty years of dedicated work and is another major asset to the park. This area was part of the North Bank/Horwood estate in 1968.

The Grand Concourse Authority has been instrumental in enhancing the lifestyles of a large proportion of the residents of the St. John's region by developing a 125 km network of inviting walkways. The Authority has established its headquarters in Pippy Park and has transformed and extended many of the trails in the park into groomed walkways which are heavily used by the tens of thousands of people who work in or visit Pippy Park every day. The working environment for students, educators, medical staff and civil servants has been much enhanced by their easy access to this walkway network.

Other opportunities for healthy outdoor exercise include Cross-Country Skiing on groomed and lighted trails on the internal roadways of the Pippy Park Campgrounds. The City of St. John's Recreation Department provides the added benefit of ski and snowshoe rentals to school groups on weekdays and the general public on weekends in the winter. Almost 11 km of back-country ski trails on the Three Pond Barrens overlooking the park and the city were cleared starting in 1978 and are available for the more adventurous.

In fulfilling its mandate to provide land for public institutions in a park-like setting the Provincial Government, the University and the College of the North Atlantic have expanded, and the huge Health Sciences Centre complex has been established along with the Institute for Ocean Technology and the Francophone Centre.

The Pippy Park Commission has now established its headquarters in impressive Mount Scio House, the former official residence of Lord Taylor the University President of the early 1970s followed by two Newfoundland Premiers, Frank Moores and Brian Peckford. Deserving organizations such as the City's Humane and Animal Adoption Centre, the Rainbow Riders, the Centre for Autism all contribute to the successful development of Pippy Park since 1968.



## Family Fun Day! Winterfest '08

A HUGE SUCCESS!

It seems incredible that on the day of the Pippy Park Winterfest '08 the weather and the snow conditions on February 24<sup>th</sup> were just right! Despite having no snow at all the previous week - not a single flake on the ground - the day before Winterfest '08 provided a major snowfall, blanketing the ground with fresh powder.

It is estimated that 400 to 500 people, both children and adults, came to enjoy the fun. There were 150 ski and snowshoe "free rentals" and a total of 200 donuts donated by Tim Horton's were quickly enjoyed along with 375 cups of hot chocolate.

The two Royal Newfoundland Constabulary mounted officers, whose horses not only posed for photographs, but also made friends with all the children.

This year's Winterfest was organized by the second year Community Recreation Leadership students from the College of the North Atlantic. They deserve hearty congratulations for the excellent way they managed the whole event including the numerous imaginative snow games and activities. They also presented prizes donated by the various sponsors in Pippy Park.

Park Info Online:  
[www.pippypark.com](http://www.pippypark.com)



## Blaketown Place New Street Name

The St. John's City Council has just approved the name of BLAKETOWN PLACE for the small cul-de-sac south off Mount Scio Road where Nagles Hill Road connected with Mount Scio Road.

In recent years, roads in this area have been realigned on several occasions. The current configuration sees Nagles Place from Allandale Road truncated in front of the Country Laundry building (former Pippy Park Headquarters, now occupied by the Easter Seals.) The new Blaketown Place connects with Mount Scio Road opposite Mount Scio Place. This cul-de-sac gives access to the former family estate of Moses O. Morgan, former University President, which was bought by his father in 1937. Moses Morgan was born in Blaketown.

## Wildlife Moose on the Loose



Quick thinking by Leann Northcott caught this photo of a moose in Pippy Park on April 4<sup>th</sup>. Leann was there at just the right moment with her cellphone as the moose passed by.